



NOMINAL PIPE SIZE (mm)	B1 (mm)	C (mm)
20-50	50	75
80-100	75	75
150-600	100	100
750 & LARGER	100	100



NOMINAL PIPE SIZE (mm)	B1 (mm)	C (mm)
20-50	100	150
80-100	100	150
150-600	150	150
750 & LARGER	200	200



ALL BEDDING TYPE IS TYPE 1 AND ALL BACKFILL IS GENERAL, UNLESS NOTED OTHERWISE.

SIGNED, Will Vast DATE 19/01/13



NOTE: FOR MAIN & FITTINGS REFER PLAN DRG'S




THE LOCATIONS OF ALL EXISTING SERVICES ARE APPROXIMATE ONLY AND THEIR EXACT POSITION SHOULD BE PROVEN ON SITE. NO GUARANTEE IS GIVEN THAT ALL EXISTING SERVICES ARE SHOWN.

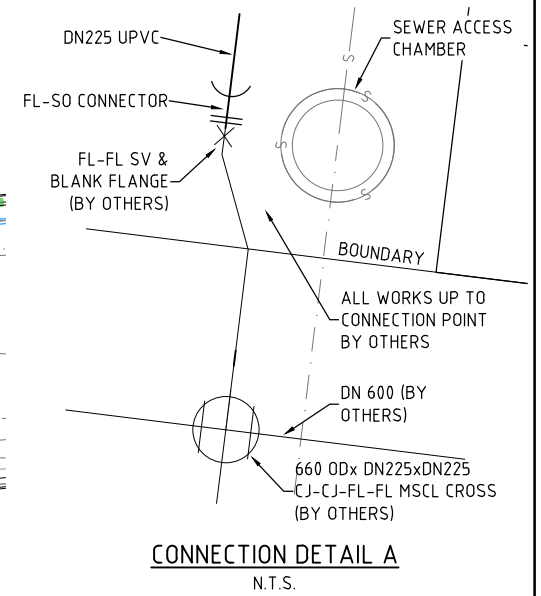
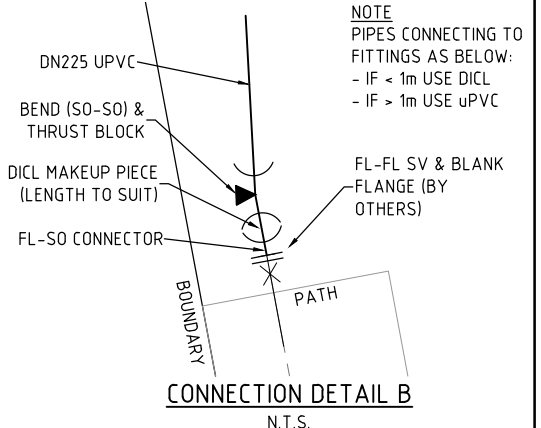
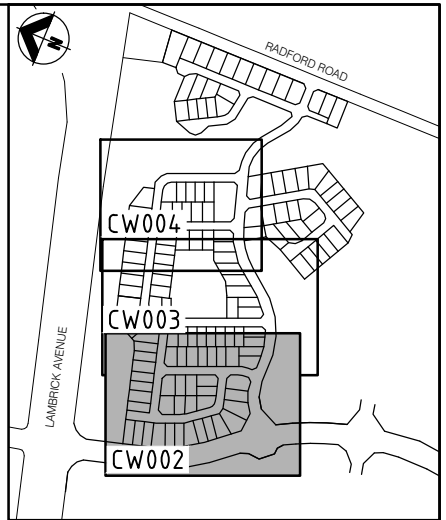
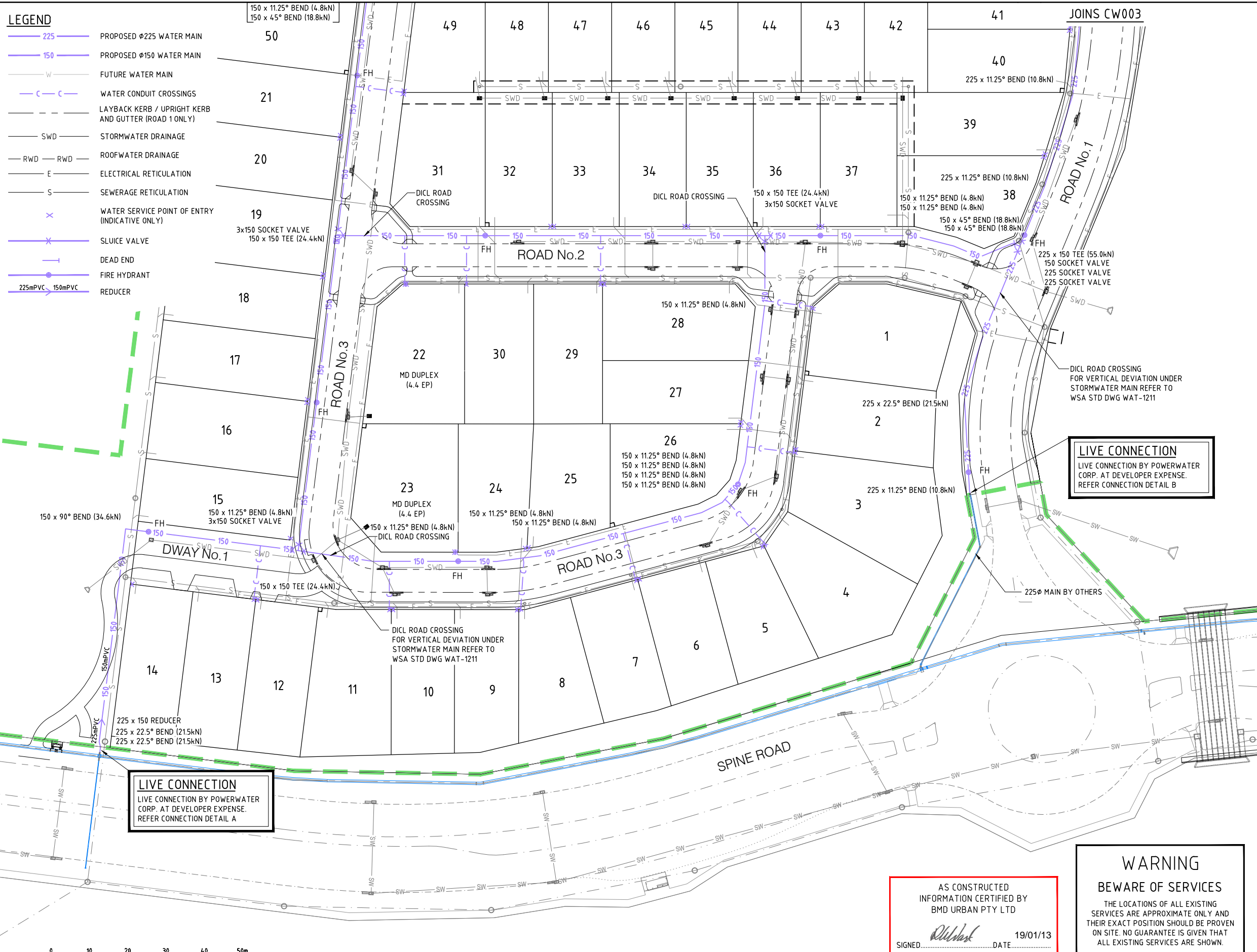
THIS DRAWING IS APPROVED FOR THE
CONSTRUCTION OF ALL WATER & SEWER COMPONENTS
AS SHOWN ON THE DRAWINGS
This approval does not relieve the developer and consultant
from full responsibility for the correctness of the design
and associated documents
This drawing is valid only for 2 years from date of signing

SIGNED **ELLA PATTERSON** DATE **31/05/2012**

POWER WATER CORP. DRG No. B12-1626

<i>Client</i>	LAND DEVELOPMENT CORPORATION/URBEX		<i>Date</i> AHD PSM RL (MGA) COORD	
<i>Project</i>	ZUCCOLI - PHASE 1.1			
<i>Title</i>	WATER RETICULATION LOCALITY AND NOTES		AS CONSTRUCTED	
	<i>Project No.</i>	<i>Drawing No.</i>	<i>Rev</i>	
	B00039-CW001		3	

- LEGEND**
- 225 PROPOSED Ø225 WATER MAIN
 - 150 PROPOSED Ø150 WATER MAIN
 - W FUTURE WATER MAIN
 - C-C WATER CONDUIT CROSSINGS
 - LAYBACK KERB / UPRIGHT KERB AND GUTTER (ROAD 1 ONLY)
 - SWD STORMWATER DRAINAGE
 - RWD ROOFWATER DRAINAGE
 - E ELECTRICAL RETICULATION
 - S SEWERAGE RETICULATION
 - X WATER SERVICE POINT OF ENTRY (INDICATIVE ONLY)
 - X SLUICE VALVE
 - DEAD END
 - FIRE HYDRANT
 - 225mPVC 150mPVC REDUCER



On behalf of WATER SERVICES, for incorporation into POWER WATER CORP'S network.

THIS DRAWING IS APPROVED FOR THE CONSTRUCTION OF ALL WATER & SEWER COMPONENTS AS SHOWN ON THE DRAWINGS

This approval does not relieve the developer and consultant from full responsibility for the correctness of the design and associated documents

This drawing is valid only for 2 years from date of signing

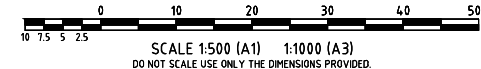
SIGNED ELLA PATTERSON DATE 31/05/2012

WARNING
BEWARE OF SERVICES

THE LOCATIONS OF ALL EXISTING SERVICES ARE APPROXIMATE ONLY AND THEIR EXACT POSITION SHOULD BE PROVEN ON SITE. NO GUARANTEE IS GIVEN THAT ALL EXISTING SERVICES ARE SHOWN.

AS CONSTRUCTED
INFORMATION CERTIFIED BY
BMD URBAN PTY LTD

SIGNED *Ellie Patterson* DATE 19/01/13



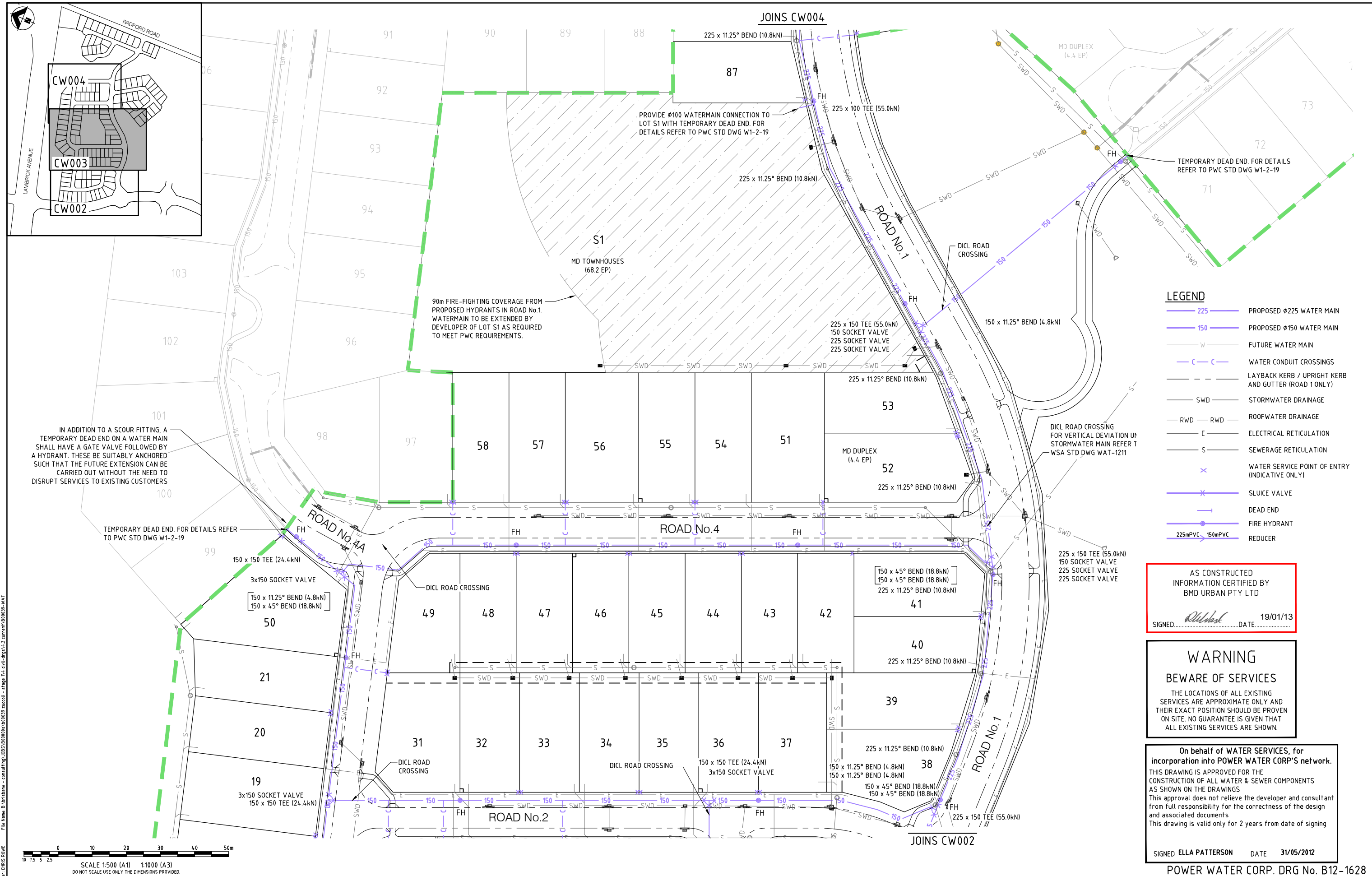
File Name: B:\urbex\urbex - consulting\URBEX\B00039-WAT - atp\14-urbex-dwg\14-2-urbex\B00039-WAT.dwg
User: CHRIS ROWE
Plot Date: 15/01/2013 2:25:26 AM

No.	Amendments	Drawn	Design	Appd	Registered Engineer	Reg No.	Date
3	AS CONSTRUCTED	CR	PDW	PI			14/01/13
2	FOR CONSTRUCTION WITH ROAD 4 AMENDMENTS	CR	PDW	PI			17/05/12
1	ISSUED FOR CONSTRUCTION	LM	PDW	PI	MKB		02/04/12

This drawing cannot be copied or reproduced in any form or used for any purpose other than that originally intended without the written permission of BMD Consulting Pty Ltd. © COPYRIGHT 2011



Client	LAND DEVELOPMENT CORPORATION/URBEX	Datum	AHD
Project	ZUCCOLI - PHASE 1.1	PSM	RL
Title	WATER RETICULATION LAYOUT PLAN SHEET 1 OF 3	(MGA) COORD	
		AS CONSTRUCTED	
		Project No.	B00039-CW002
		Drawing No.	
		Rev	3



3	AS CONSTRUCTED	CR	PDW	PI		14/01/13
2	FOR CONSTRUCTION WITH ROAD 4 AMENDMENTS	CR	PDW	PI		17/05/12
1	ISSUED FOR CONSTRUCTION	LM	PDW	PI	MKB	02/04/12
No.	Amendments	Drawn	Design	Appd	Registered Engineer	Reg No. Date

This drawing cannot be copied or reproduced in any form or used for any purpose other than that originally intended without the written permission of BMD Consulting Pty Ltd. © COPYRIGHT 2011



LAND DEVELOPMENT CORPORATION



BMD consulting

25 Cambridge Parade, Maribyrnong VIC 3047
Phone: 9477 7700 Fax: 9477 4000
E: info@bmd.com.au
www.bmd.com.au

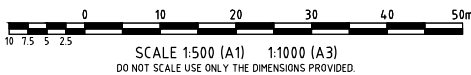


SGS

Client: LAND DEVELOPMENT CORPORATION/URBEX
Project: ZUCCOLI - PHASE 1.1
Title: WATER RETICULATION LAYOUT PLAN SHEET 2 OF 3

Datum: AHD
PSM . RL . (MGA) COORD
AS CONSTRUCTED
Project No. B00039-CW003
Drawing No. 3

File Name: B:\urbex - consulting\B00039\B00039 - zuccoli - stage 1\civil-dwg\1-2\current\B00039-WAT
User: CHRIS ROWE
Plot Date: 15/01/2013 9:25:35 AM

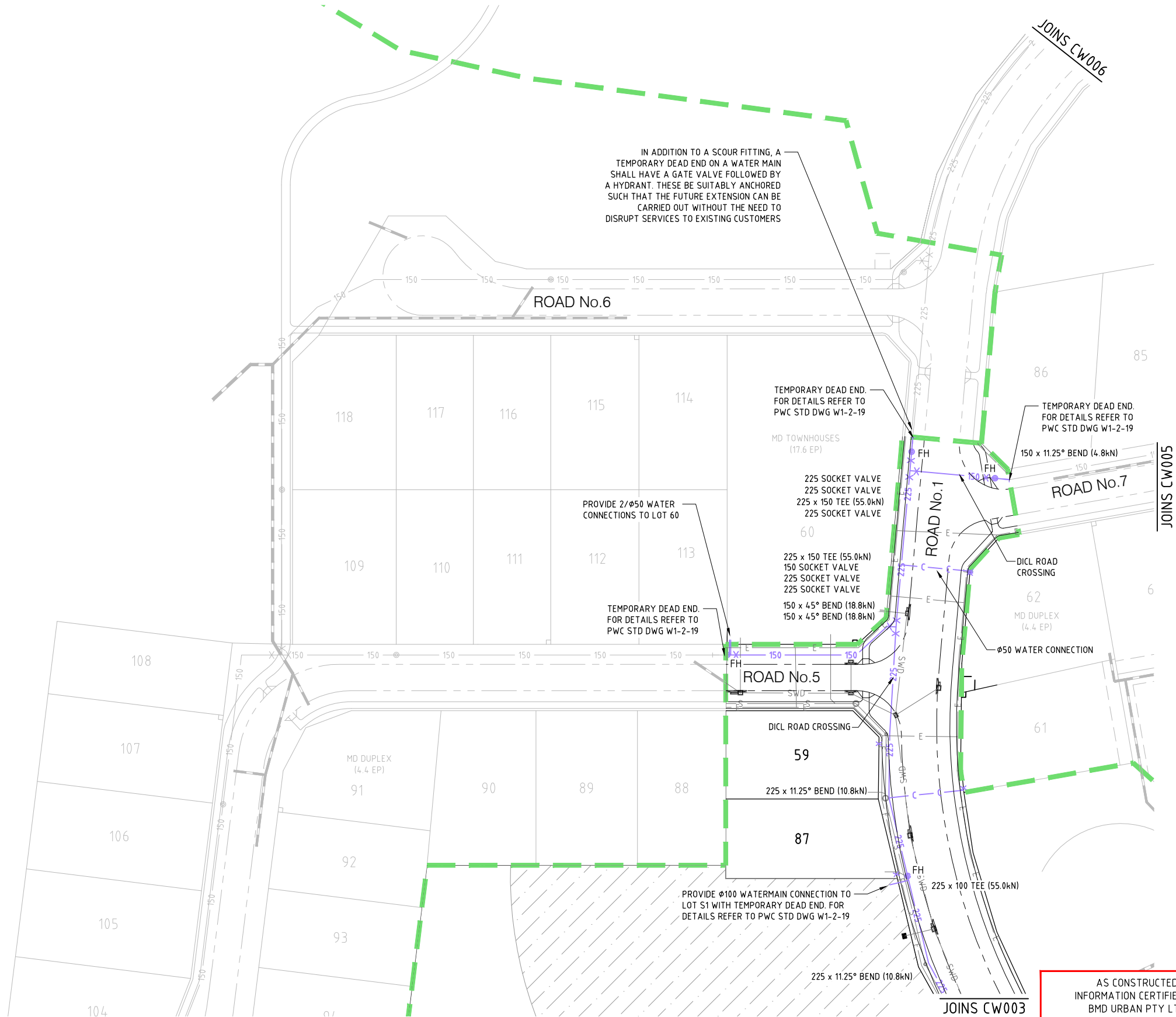


No.	Amendments	Drawn	Design	Appd	Registered Engineer	Reg No.	Date
3	AS CONSTRUCTED	CR	PDW	PI			14/01/13
2	FOR CONSTRUCTION WITH ROAD 4 AMENDMENTS	CR	PDW	PI			17/05/12
1	ISSUED FOR CONSTRUCTION	LM	PDW	PI	MKB		02/04/12

This drawing cannot be copied or reproduced in any form or used for any purpose other than that originally intended without the written permission of BMD Consulting Pty Ltd. © COPYRIGHT 2011



Client	LAND DEVELOPMENT CORPORATION/URBEX		Datum	AHD
Project	ZUCCOLI - PHASE 1.1		PSM	RL
Title	WATER RETICULATION LAYOUT PLAN SHEET 3 OF 3		(MGA) COORD	
AS CONSTRUCTED		Project No.	B00039-CW004	Rev
		Drawing No.		3



IN ADDITION TO A SCOUR FITTING, A TEMPORARY DEAD END ON A WATER MAIN SHALL HAVE A GATE VALVE FOLLOWED BY A HYDRANT. THESE BE SUITABLY ANCHORED SUCH THAT THE FUTURE EXTENSION CAN BE CARRIED OUT WITHOUT THE NEED TO DISRUPT SERVICES TO EXISTING CUSTOMERS

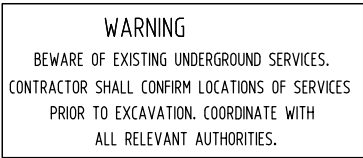
LEGEND	
	PROPOSED Ø225 WATER MAIN
	PROPOSED Ø150 WATER MAIN
	FUTURE WATER MAIN
	WATER CONDUIT CROSSINGS
	LAYBACK KERB / UPRIGHT KERB AND GUTTER (ROAD 1 ONLY)
	STORMWATER DRAINAGE
	ROOFWATER DRAINAGE
	ELECTRICAL RETICULATION
	SEWERAGE RETICULATION
	WATER SERVICE POINT OF ENTRY (INDICATIVE ONLY)
	SLUICE VALVE
	DEAD END
	FIRE HYDRANT
	REDUCER

WARNING
BEWARE OF SERVICES
THE LOCATIONS OF ALL EXISTING SERVICES ARE APPROXIMATE ONLY AND THEIR EXACT POSITION SHOULD BE PROVEN ON SITE. NO GUARANTEE IS GIVEN THAT ALL EXISTING SERVICES ARE SHOWN.

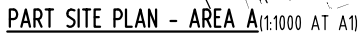
On behalf of WATER SERVICES, for incorporation into POWER WATER CORP'S network.
THIS DRAWING IS APPROVED FOR THE CONSTRUCTION OF ALL WATER & SEWER COMPONENTS AS SHOWN ON THE DRAWINGS
This approval does not relieve the developer and consultant from full responsibility for the correctness of the design and associated documents
This drawing is valid only for 2 years from date of signing
SIGNED ELLA PATTERSON DATE 31/05/2012

AS CONSTRUCTED
INFORMATION CERTIFIED BY
BMD URBAN PTY LTD
SIGNED... DATE 19/01/13

POWER WATER CORP. DRG No. B12-1629



✓



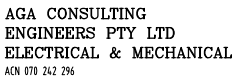
CONTRACTOR:

**NORTHERN POWER
SERVICES**
PO BOX 1844
PALMERSTON NT 0831

PHONE: 8932 9317
FACSIMILE: 8932 9346

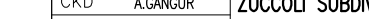

DEVELOPER:
URBEX
PTY LTD

PHONE: 8947 6970
FACSIMILE: 8947 6979
EMAIL: Andrew.Bartington@urbex.com.au
CONTACT: ANDREW BARTINGTON



GPO BOX 3097
DARWIN NT 0801

TELEPHONE: 08 89416582
FACSIMILE : 08 89421400
EMAIL: alekq@agaeng.com.au

D C B A	AS CONSTRUCTED AS CONSTRUCTED ISSUED FOR CONSTRUCTION ISSUED FOR POWER AND WATER APPROVAL	K.T. K.T. K.L K.L	28-3-13 31-1-13 17-9-12 13-9-12	A.G. A.G. A.G. A.G.	B12-8404	SINGLE LINE DIAGRAM (SHEET 2 OF 2) SINGLE LINE DIAGRAM & LEGEND (SHEET 1 OF 2) NOTES, HV SCHEMATICS & POLE SCHEDULE MASTER SERVICES PLAN (SHEET 2 OF 2) MASTER SERVICES PLAN (SHEET 1 OF 2) CONDUIT/DUCT LAYOUT (SHEET 2 OF 2) CONDUIT/DUCT LAYOUT (SHEET 1 OF 2) STREET LIGHTING RETICULATION (SHEET 2 OF 2) STREET LIGHTING RETICULATION (SHEET 1 OF 2) LV ELECTRICAL RETICULATION (SHEET 2 OF 2) HV ELECTRICAL RETICULATION	DRAWING STATUS		APPD	DATE	<div></div> <div>NORTHERN TERRITORY</div>	DES A.GANGUR	POWER NETWORKS – PALMERSTON DISTRIBUTION		<div></div> <div>AMDT</div>
					P		PRELIMINARY/PROPOSED			DRN K.TAVENER		SUBDIVISION OF LOT 11022			
					T		TENDERING PURPOSES ONLY			CKD A.GANGUR		ZUCCOLI SUBDIVISION – PHASE 1.1			
					AC		APP. FOR CONSTRUCTION			APPD		LV ELECTRICAL RETICULATION			
					AI		AS INSTALLED			SCALE 1:1000 AT A1		(SHEET 1 OF 2)			
					C		CANCELLED/SUPERSEDED			ISSUED 28-3-13		A1	DRAWING NUMBER B12-8394		
										ALL DIM. IN mm					
NO	DESCRIPTION	DRN	DATE	APPD	DRG NO	TITLE					DRAFTING STANDARD TO A.S.1100	FILE No: NE590/11022			
AMENDMENTS								AGA377-7							
ASSOCIATED DRAWINGS															

1 - REFER DWG No. B12-8402 FOR DETAILS OF ITEMS LISTED IN LEGEND.

2 - LV CABLING SHALL BE RUN BELOW (DEEPER THAN STANDARD ELECTRICAL TRENCH DEPTH/COVER) SEWER AND/OR STORMWATER MAINS WITH A MINIMUM OF 300mm CLEARANCE AT CROSSOVER LOCATIONS. COORDINATE ON SITE WITH CIVIL CONTRACTOR.

3 - MINIMUM 300mm HORIZONTAL SEPARATION REQUIRED BETWEEN EDGE OF TELSTRA CONDUIT/S & LV CABLEING. TRENCH WIDTH MAYBE EXTENDED BY 200mm TOWARDS PROPERTY BOUNDARY TO ENSURE 300mm HORIZONTAL SEPARATION PROVIDED. WHERE 300mm SEPARATION NOT PROVIDED, LV CABLEING SHALL BE INSTALLED IN 100mm HD uPVC CONDUIT. ALSO REFER DWG No. B12-8393, DETAILS B & C.

E RMU EXISTING RING MAIN UNIT.


 PACKAGE SUBSTATION (RATING AS SHOWN).
 'F' INDICATES FUTURE.

D/F ^{LL} DISTRIBUTION DOUBLE LINK PILLAR - FUSED TYPE.
'F' INDICATES FUTURE.

D/F ^L DISTRIBUTION LINK PILLAR - FUSED TYPE.
'F' INDICATES FUTURE.

D/F DISTRIBUTION PILLAR - FUSED TYPE.
'F' INDICATES FUTURE.

LV DISTRIBUTION CABLE - 0.6/1kV 4 x 1C 240 Sq mm AL, XLPE/NJ/PVC
& 1 x 1C 70 Sq mm Cu, BARE EARTH - DIRECT BURIED (OR WITHIN CONDUIT
AT ROAD CROSSINGS). ALSO REFER NOTE 3.
'F' INDICATES FUTURE.

----- LV SERVICE CABLE - 0.6/1kV 2 x 1C 25 Sq mm Cu, XLPE/NJ/PVC - DIRECT BURIED
(OR WITHIN CONDUIT AT ROAD CROSSINGS). ALSO REFER NOTE 3.

---4--- PARALLEL LV SERVICE CABLE - 0.6/1kV 4 x 1C 25 Sq mm Cu, XLPE/NJ/PVC - DIRECT BURIED
(OR WITHIN CONDUIT AT ROAD CROSSINGS). ALSO REFER NOTE 3.

30 3 PHASE LV SERVICE CABLE - 0.6/1kV 4 x 1C 25 Sq mm Cu, XLPE/NJ/PVC - DIRECT BURIED (OR WITHIN CONDUIT AT ROAD CROSSINGS). ALSO REFER NOTE 3.

----- 3Ø(F) FUTURE 3 PHASE CONSUMER MAINS - BY LOT OWNER.

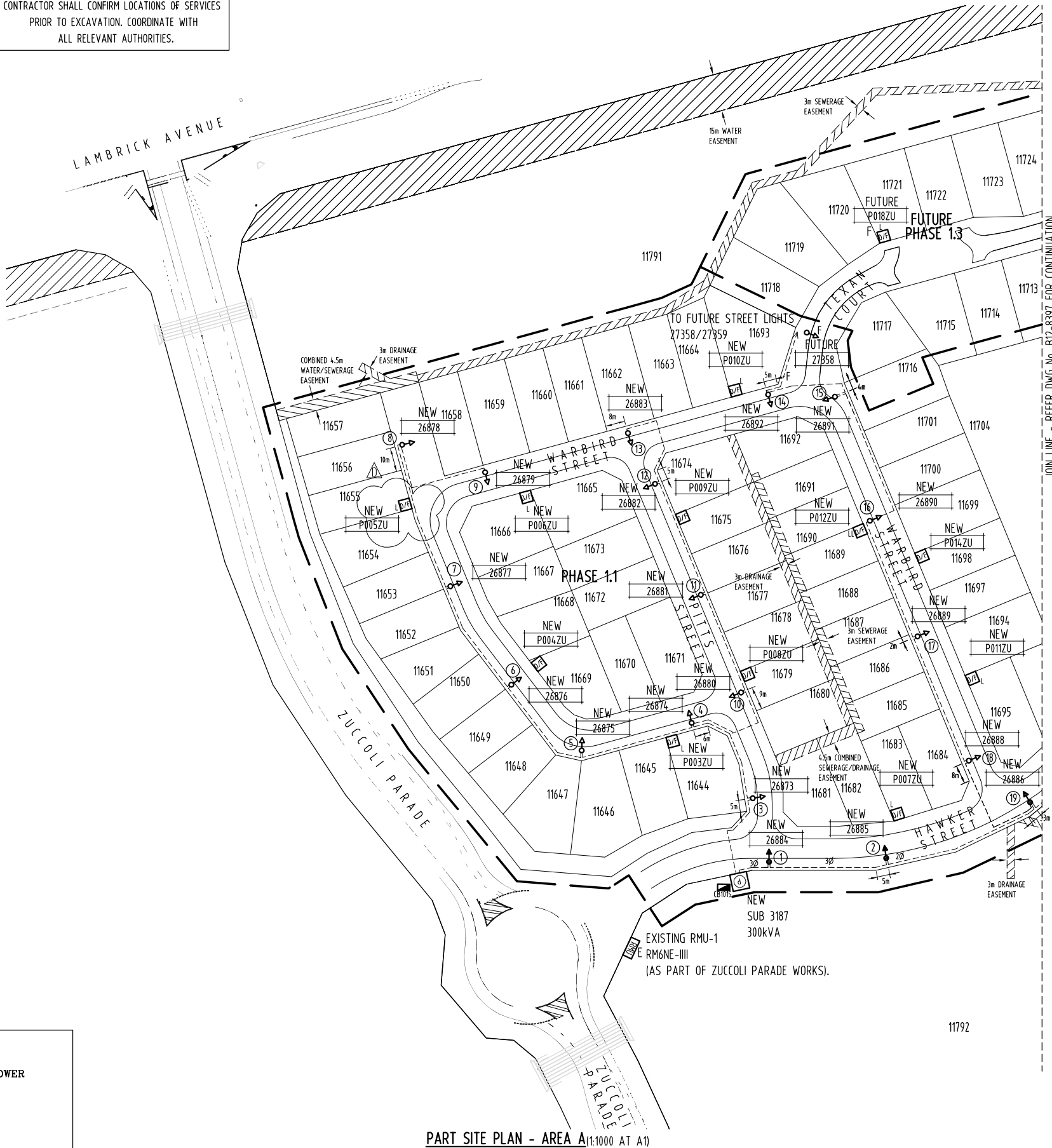




WARNING

BEWARE OF EXISTING UNDERGROUND SERVICES.
CONTRACTOR SHALL CONFIRM LOCATIONS OF SERVICES
PRIOR TO EXCAVATION. COORDINATE WITH
ALL RELEVANT AUTHORITIES.

GIFTED ASSETS



PART SITE PLAN - AREA A (1:1000 AT A1)

NOTES

- 1 - REFER DWG No. B12-8402 FOR DETAILS OF ITEMS LISTED IN LEGEND.
- 2 - EXTEND CONDUIT FROM STREET LIGHT ELBOW TO WITHIN ELECTRICAL SERVICES TRENCH ALLOCATION.
- 3 - STREET LIGHTING SHALL BE CONNECTED TO NEW SUB 3187/NEW SUB 3189 (SUB'S INCORPORATE TIME CLOCK CONTROL PANELS).
- 4 - STREET LIGHTING CABLING SHALL BE RUN BELOW (DEEPER THAN STANDARD ELECTRICAL TRENCH DEPTH/COVER) SEWER AND/OR STORMWATER MAIN WITH A MINIMUM OF 300mm CLEARANCE AT CROSSOVER LOCATIONS. COORDINATE ON SITE WITH CIVIL CONTRACTOR.
- 5 - MINIMUM 300mm HORIZONTAL SEPARATION REQUIRED BETWEEN EDGE OF TELSTRA CONDUIT/S & LV CABLING. TRENCH WIDTH MAYBE EXTENDED BY 200mm TOWARDS PROPERTY BOUNDARY TO ENSURE 300mm HORIZONTAL SEPARATION PROVIDED. WHERE 300mm SEPARATION NOT PROVIDED, STREET LIGHTING CABLING SHALL BE INSTALLED IN 80mm HD uPVC CONDUIT. ALSO REFER DWG No. B12-8393, DETAILS B & C.

LEGEND

- RMU** EXISTING RING MAIN UNIT.
- P** PACKAGE SUBSTATION (RATING AS SHOWN).
'F' INDICATES FUTURE.
- D/F LL** DISTRIBUTION DOUBLE LINK PILLAR - FUSED TYPE.
'F' INDICATES FUTURE.
- D/F L** DISTRIBUTION LINK PILLAR - FUSED TYPE.
'F' INDICATES FUTURE.
- D/F** DISTRIBUTION PILLAR - FUSED TYPE.
'F' INDICATES FUTURE.
- STREET LIGHT CABLE - 0.6/1kV 2x1C 25 Sq mm Cu, XLPE/NJ/PVC - DIRECT BURIED (OR WITHIN CONDUIT AT ROAD CROSSINGS/INTO STREET LIGHT POLE). NOTE: STREET LIGHT CIRCUITS INCLUDE 1x1C 35 Sq mm Cu BARE EARTH CONNECTED TO STREET LIGHTING CIRCUITS ON SUBSTATIONS. ALSO REFER NOTE 5.
- 2P --- 2 PHASE STREET LIGHT CABLE - 0.6/1kV 3x1C 25 Sq mm Cu, XLPE/NJ/PVC - DIRECT BURIED (OR WITHIN CONDUIT AT ROAD CROSSINGS/INTO STREET LIGHT POLE). NOTE: STREET LIGHT CIRCUITS INCLUDE 1x1C 35 Sq mm Cu BARE EARTH CONNECTED TO STREET LIGHTING CIRCUITS ON SUBSTATIONS SHOWN. ALSO REFER NOTE 5.
- 3P --- 3 PHASE STREET LIGHT CABLE - 0.6/1kV 4x1C 25 Sq mm Cu, XLPE/NJ/PVC - DIRECT BURIED (OR WITHIN CONDUIT AT ROAD CROSSINGS/INTO STREET LIGHT POLE). NOTE: STREET LIGHT CIRCUITS INCLUDE 1x1C 35 Sq mm Cu BARE EARTH CONNECTED TO STREET LIGHTING CIRCUITS ON SUBSTATIONS SHOWN. ALSO REFER NOTE 5.
- STREET LIGHT - 150W HPS 'REXEL' OPTISPAN LUMINAIRE MOUNTED ON 9m POLE WITH 1.5m OUTREACH. SET BACK 1.1m FROM KERB.
- STREET LIGHT - 70W HPS 'REXEL' OPTIMA LUMINAIRE MOUNTED ON 6.5m POLE WITH 1.5m CURVED OUTREACH. SET BACK 1.1m FROM KERB.
- CB ■ STREET LIGHT CONTROL PANEL (MOUNTED WITHIN SUB SHOWN).

CONTRACTOR:

NORTHERN POWER SERVICES

PO BOX 1844
PALMERSTON NT 0831

PHONE: 8932 9317
FACSIMILE: 8932 9346

DEVELOPER:

URBEX PTY LTD

PO Box 38521
WINNELLIE NT 0821

PHONE: 8947 6970
FACSIMILE: 8947 6979
EMAIL: Andrew.Bartington@urbex.com.au
CONTACT: ANDREW BARTINGTON



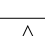
AGA CONSULTING ENGINEERS PTY LTD
ELECTRICAL & MECHANICAL
ACN 070 242 296

GPO BOX 3097
DARWIN NT 0801

TELEPHONE: 08 89416582
FACSIMILE: 08 89421400
EMAIL: aiek@agaeng.com.au

D C B A	AS CONSTRUCTED AS CONSTRUCTED ISSUED FOR CONSTRUCTION ISSUED FOR POWER AND WATER APPROVAL	K.T. K.T. K.J. K.J.	28-3-13 31-1-13 17-9-12 13-9-12	A.G. A.G. A.G. A.G.	B12-8404 B12-8403 B12-8402 B12-8401 B12-8400 B12-8399 B12-8398 B12-8397 B12-8395 B12-8394 B12-8393	SINGLE LINE DIAGRAM & LEGEND (SHEET 2 OF 2) SINGLE LINE DIAGRAM & LEGEND (SHEET 1 OF 2) NOTES, HV SCHEMATICS & POLE SCHEDULE MASTER SERVICES PLAN (SHEET 2 OF 2) MASTER SERVICES PLAN (SHEET 1 OF 2) CONDUIT/DUCT LAYOUT (SHEET 2 OF 2) CONDUIT/DUCT LAYOUT (SHEET 1 OF 2) STREET LIGHTING RETICULATION (SHEET 2 OF 2) LV ELECTRICAL RETICULATION (SHEET 2 OF 2) LV ELECTRICAL RETICULATION (SHEET 1 OF 2) HV ELECTRICAL RETICULATION	DRAWING STATUS		APPD	DATE
							P	PRELIMINARY/PROPOSED		
							T	TENDERING PURPOSES ONLY		
							AC	APP. FOR CONSTRUCTION		
							AI	AS INSTALLED		
							C	CANCELLED/SUPERSEDED		
NO	DESCRIPTION	DRN	DATE	APPD	DRG NO	TITLE				
AMENDMENTS							ASSOCIATED DRAWINGS			
								AGA377-7		

PowerWater
NORTHERN TERRITORY

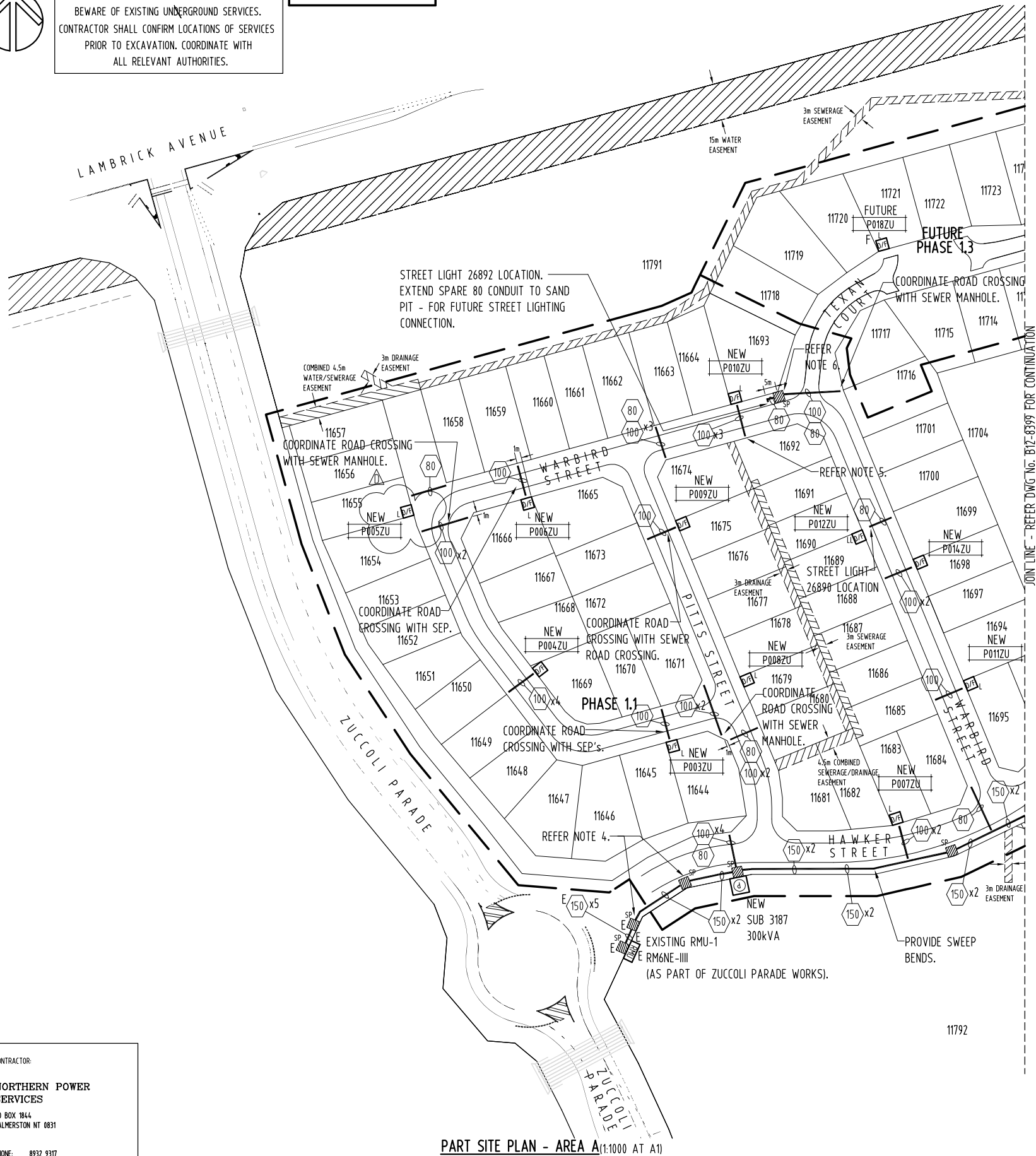
DES	A.GANGUR	POWER NETWORKS – PALMERSTON DISTRIBUTION SUBDIVISION OF LOT 11022 ZUCCOLI SUBDIVISION – PHASE 1.1 STREET LIGHTING RETICULATION (SHEET 1 OF 2)		
DRN	K.TAVENER			
CKD	A.GANGUR			
APPD				
SCALE	1:1000 AT A1	A1	DRAWING NUMBER B12-8396	 AMDT
ISSUED	28-3-13			
ALL DIM. IN mm				
DRAFTING STANDARD TO A.S.1100		FILE No: NE590/11022		





WARNING
BEWARE OF EXISTING UNDERGROUND SERVICES.
CONTRACTOR SHALL CONFIRM LOCATIONS OF SERVICES
PRIOR TO EXCAVATION. COORDINATE WITH
ALL RELEVANT AUTHORITIES.

GIFTED ASSETS



PART SITE PLAN - AREA A (1:1000 AT A1)

NOTES

- 1 - REFER DWG No. B12-8402 FOR DETAILS OF ITEMS LISTED IN LEGEND.
- 2 - ALL SPARE CONDUITS SHALL INCLUDE DRAW WIRES/FITTED WITH END CAPS.
- 3 - PROVIDE CONTINUOUS SWEEP BENDS IN ALL CHANGES IN CONDUIT ROUTE DIRECTIONS.
- 4 - CONTRACTOR SHALL LOCATE EXISTING SAND PITS AT LOCATIONS SHOWN, INSTALL NEW HV CABLING WITHIN EXISTING 2x150mm HD uPVC CONDUITS BETWEEN EXISTING SAND PITS SHOWN, THEN RUN IN NEW 1x150mm HD uPVC CONDUIT TO NEW SUB 3187 & IN NEW 1x150mm HD uPVC CONDUIT TO NEW SUB 3189.
- 5 - EXTEND & LEAVE 3m 1x1C 70 Sq mm Cu, BARE EARTH COILED WITHIN SAND PITS SHOWN FOR FUTURE STAGE CONNECTION.
- 6 - EXTEND & LEAVE 3m 1x1C 35 Sq mm Cu, BARE EARTH COILED WITHIN SAND PIT SHOWN FOR FUTURE STREET LIGHTING CONNECTION.
- 7 - SUPPLY & INSTALL 1x150mm 90° SWEEP BEND INTO NEW SUB 3189 HV SECTION - FOR FUTURE STAGE HV CABLING (CONDUIT TO ALIGN WITH SPARE HV SWITCH). EXTEND CONDUIT TO WITHIN SAND PIT IN ROAD RESERVE IN FRONT OF NEW SUB 3189.
- 8 - SUPPLY & INSTALL 2x100mm 90° SWEEP BENDS INTO NEW SUB 3189 LV SECTION - USED FOR FUTURE STAGE LV DIST. CABLING. EXTEND CONDUITS TO WITHIN SAND PIT IN ROAD RESERVE IN FRONT OF NEW SUB 3189. SUPPLY & INSTALL 1x100mm SWEEP BEND INTO NEW DIST. PILLAR P015ZU - FOR FUTURE STAGE LV DIST. CABLING. EXTEND CONDUIT TO WITHIN SAND PIT IN ROAD RESERVE IN FRONT OF NEW DIST. PILLAR P015ZU.
- 9 - SUPPLY & INSTALL 2x100mm 90° SWEEP BENDS INTO NEW SUB 3188 LV SECTION - FOR LOT 11704 FUTURE CONSUMER MAINS. EXTEND CONDUITS 1000 BEYOND NEW SUB 3188 INTO LOT 11704 & CAP.
- 10 - EXTEND ALL CONDUITS AT ROAD CROSSINGS TO WITHIN ELECTRICAL SERVICES TRENCH ALLOCATION.
- 11 - CONDUITS SHALL BE INSTALLED IN A CONTINUOUS SWEEP CURVE.
- 12 - MINIMUM 300mm HORIZONTAL SEPARATION REQUIRED BETWEEN EDGE OF TELSTRA CONDUIT/S & LV CABLING. TRENCH WIDTH MAYBE EXTENDED BY 200mm TOWARDS PROPERTY BOUNDARY TO ENSURE 300mm HORIZONTAL SEPARATION PROVIDED. WHERE 300mm SEPARATION NOT PROVIDED, LV CABLING SHALL BE INSTALLED IN 100mm HD uPVC CONDUIT/STREET LIGHTING CABLING IN 80mm HD uPVC CONDUIT. ALSO REFER DWG No. B12-8393, DETAILS B & C.

LEGEND

- E**
- EXISTING RING MAIN UNIT.
 - PACKAGE SUBSTATION (RATING AS SHOWN).
'F' INDICATES FUTURE.
 - DISTRIBUTION DOUBLE LINK PILLAR - FUSED TYPE.
'F' INDICATES FUTURE.
 - DISTRIBUTION LINK PILLAR - FUSED TYPE.
'F' INDICATES FUTURE.
 - DISTRIBUTION PILLAR - FUSED TYPE.
'F' INDICATES FUTURE.
 - ELECTRICAL CONDUIT/DUCT. CONDUIT/DUCT TYPE AS FOLLOWS:
 - HD uPVC FOR ALL HV CABLING.
 - HD uPVC FOR LV DIST./SERVICE/STREET LIGHT CABLING FOR ROAD CROSSINGS/RESERVE.
 - 'E' INDICATES EXISTING.
 - NUMBER INSIDE INDICATES CONDUIT/DUCT SIZE.
- NUMBER SHOWN/DRAWN INDICATES NUMBER OF CONDUITS REQUIRED.
'E' INDICATES EXISTING.
 - SAND PIT - 1000x1000x600D WITH A MINIMUM COVER OF 0.9m TO TOP OF CONDUITS.
'E' INDICATES EXISTING.

CONTRACTOR:

NORTHERN POWER SERVICES
PO BOX 1844
PALMERSTON NT 0831

PHONE: 8932 9317
FACSIMILE: 8932 9346

DEVELOPER:

URBEX PTY LTD
PO Box 38521
WINNELLIE NT 0821

PHONE: 8947 6970
FACSIMILE: 8947 6979
EMAIL: Andrew.Bartington@urbex.com.au
CONTACT: ANDREW BARTINGTON



AGA CONSULTING ENGINEERS PTY LTD
ELECTRICAL & MECHANICAL
ACN 070 242 296

GPO BOX 3097
DARWIN NT 0801

TELEPHONE: 08 89416582
FACSIMILE: 08 89421400
EMAIL: aieky@gageng.com.au

NO	DESCRIPTION	DRN	DATE	APPD	DRG NO	TITLE
D C B A	AS CONSTRUCTED AS CONSTRUCTED ISSUED FOR CONSTRUCTION ISSUED FOR POWER AND WATER APPROVAL	K.T. K.T. K.J. K.J.	28-3-13 31-1-13 17-9-12 13-9-12	A.G. A.G. A.G. A.G.	B12-8404 B12-8403 B12-8402 B12-8401 B12-8400 B12-8399 B12-8397 B12-8396 B12-8395 B12-8394 B12-8393	SINGLE LINE DIAGRAM (SHEET 2 OF 2) SINGLE LINE DIAGRAM & LEGEND (SHEET 1 OF 2) NOTES, HV SCHEMATICS & POLE SCHEDULE MASTER SERVICES PLAN (SHEET 2 OF 2) MASTER SERVICES PLAN (SHEET 1 OF 2) CONDUIT/DUCT LAYOUT (SHEET 2 OF 2) STREET LIGHTING RETICULATION (SHEET 2 OF 2) STREET LIGHTING RETICULATION (SHEET 1 OF 2) LV ELECTRICAL RETICULATION (SHEET 2 OF 2) LV ELECTRICAL RETICULATION (SHEET 1 OF 2) HV ELECTRICAL RETICULATION
AMENDMENTS						
ASSOCIATED DRAWINGS						

DRAWING STATUS	APPD	DATE
P PRELIMINARY/PROPOSED		
T TENDERING PURPOSES ONLY		
AC APP. FOR CONSTRUCTION		
AI AS INSTALLED		
C CANCELLED/SUPERSEDED		
AGA377-7		

PowerWater
NORTHERN TERRITORY

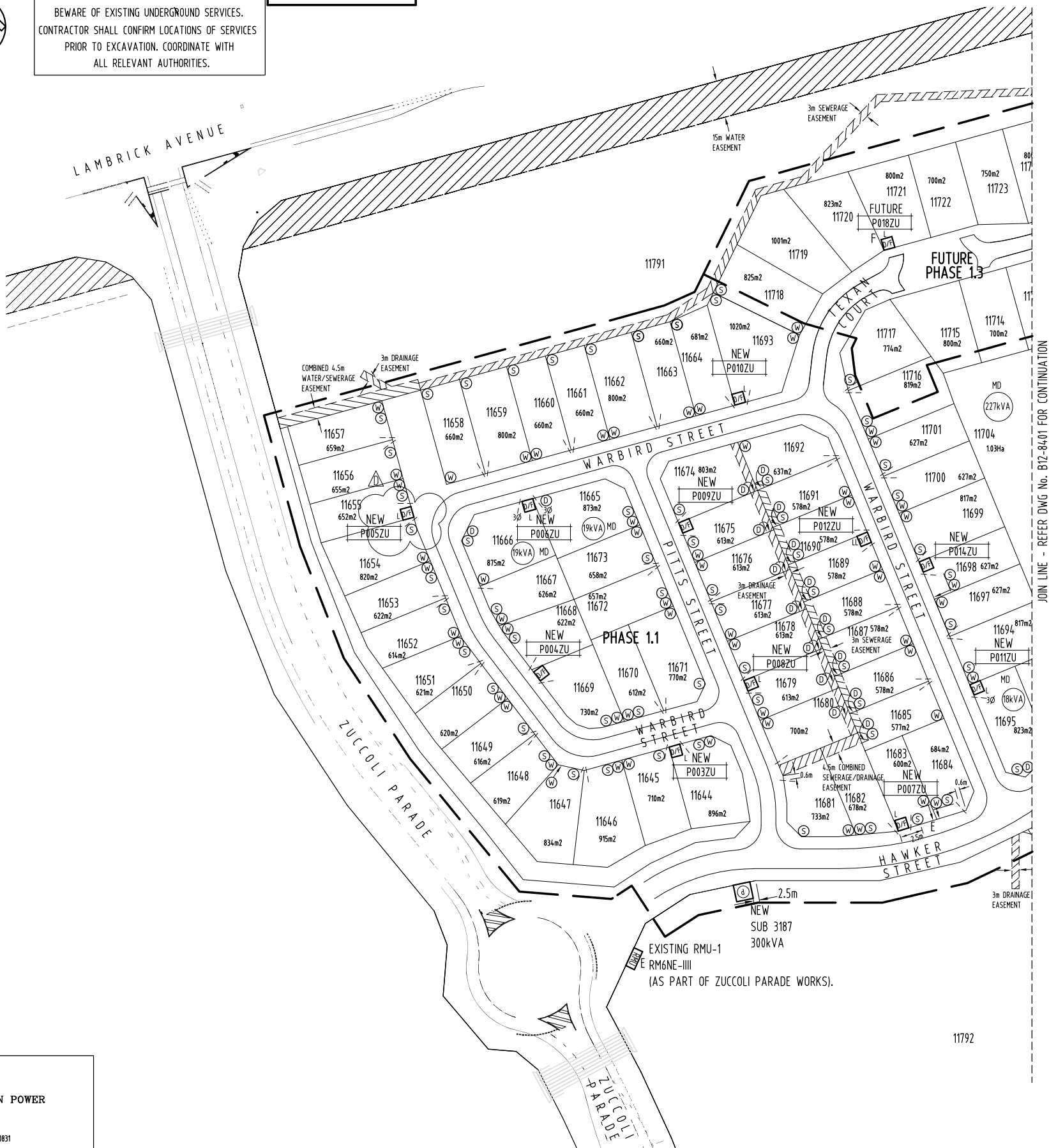
DES A.GANGUR	POWER NETWORKS – PALMERSTON DISTRIBUTION	
DRN K.TAVENER	SUBDIVISION OF LOT 11022	
CKD A.GANGUR	ZUCCOLI SUBDIVISION – PHASE 1.1	
APPD	CONDUIT/DUCT LAYOUT	
SCALE 1:1000 AT A1	(SHEET 1 OF 2)	
ISSUED 28-3-13	A1	DRAWING NUMBER
ALL DIM. IN mm		B12-8398
DRAFTING STANDARD TO A.S.1100	FILE No: NE590/11022	



WARNING

BEWARE OF EXISTING UNDERGROUND SERVICES.
CONTRACTOR SHALL CONFIRM LOCATIONS OF SERVICES
PRIOR TO EXCAVATION. COORDINATE WITH
ALL RELEVANT AUTHORITIES.

GIFTED ASSETS



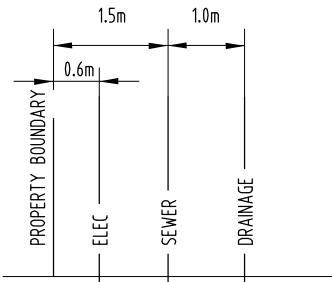
PART SITE PLAN - AREA A (1:1000 AT A1)

LEGEND

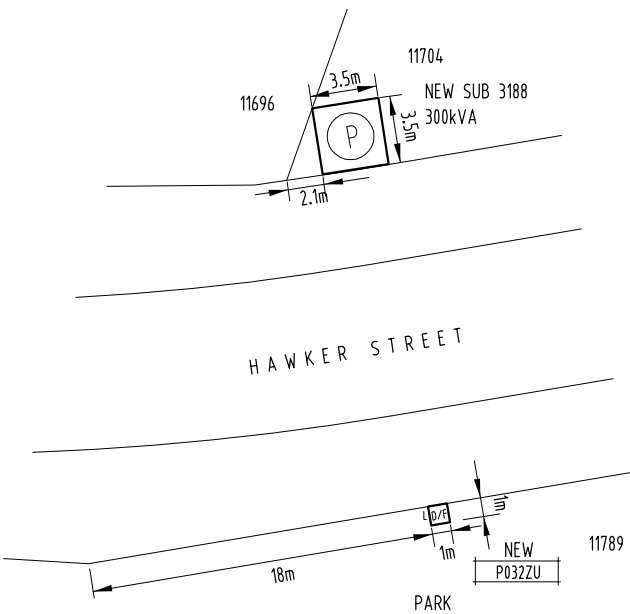
- EXISTING RING MAIN UNIT.
- PACKAGE SUBSTATION (RATING AS SHOWN).
'F' INDICATES FUTURE.
- DISTRIBUTION DOUBLE LINK PILLAR - FUSED TYPE.
'F' INDICATES FUTURE.
- DISTRIBUTION LINK PILLAR - FUSED TYPE.
'F' INDICATES FUTURE.
- DISTRIBUTION PILLAR - FUSED TYPE.
'F' INDICATES FUTURE.
- LV SERVICE CABLE/CONNECTION.
- - - - - PARALLEL LV SERVICE CABLE/CONNECTION.
- 3Ø - 3 PHASE LV SERVICE CABLE/CONNECTION.
- 3Ø (F) - FUTURE 3 PHASE CONSUMER MAINS - BY LOT OWNER.
- (W) WATER CONNECTION.
- (S) SEWER CONNECTION.
- (D) DRAINAGE CONNECTION.

NOTES

1 - REFER DWG No. B12-8402 FOR DETAILS OF ITEMS LISTED IN LEGEND
(EXCLUDING WATER/SEWER/DRAINAGE CONNECTION).



DETAIL E - TYPICAL SERVICE CONNECTION WHERE
ELEC/SEWER/DRAINAGE IN SAME LOT CORNER (N.T.S.)



DETAIL F - SUB 3188/PILLAR P032ZU SET OUT (1:200 AT A1)

CONTRACTOR:

**NORTHERN POWER
SERVICES**

PO BOX 1844
PALMERSTON NT 0831

PHONE: 8932 9317
FACSIMILE: 8932 9346

DEVELOPER:

**URBEX
PTY LTD**

PO BOX 38521
WINNELLIE NT 0821

PHONE: 8947 6970
FACSIMILE: 8947 6979
EMAIL: Andrew.Bartington@urbex.com.au
CONTACT: ANDREW BARTINGTON



**AGA CONSULTING
ENGINEERS PTY LTD
ELECTRICAL & MECHANICAL**
ACN 070 242 296

GPO BOX 3097
DARWIN NT 0801

TELEPHONE: 08 89416582
FACSIMILE: 08 89421400
EMAIL: aieky@ageng.com.au


NO	DESCRIPTION	DRN	DATE	APPD	DRG NO	TITLE
D	AS CONSTRUCTED	K.T.	28-3-13	A.G.	B12-8404	SINGLE LINE DIAGRAM (SHEET 2 OF 2)
C	AS CONSTRUCTED	K.T.	31-1-13	A.G.	B12-8403	SINGLE LINE DIAGRAM & LEGEND (SHEET 1 OF 2)
A	ISSUED FOR CONSTRUCTION	K.J.	17-9-12	A.G.	B12-8402	NOTES, HV SCHEMATICS & POLE SCHEDULE
	ISSUED FOR POWER AND WATER APPROVAL	K.J.	13-9-12	A.G.	B12-8401	MASTER SERVICES PLAN (SHEET 2 OF 2)
					B12-8399	CONDUIT/DUCT LAYOUT (SHEET 2 OF 2)
					B12-8398	CONDUIT/DUCT LAYOUT (SHEET 1 OF 2)
					B12-8397	STREET LIGHTING RETICULATION (SHEET 2 OF 2)
					B12-8396	STREET LIGHTING RETICULATION (SHEET 1 OF 2)
					B12-8395	LV ELECTRICAL RETICULATION (SHEET 2 OF 2)
					B12-8394	LV ELECTRICAL RETICULATION (SHEET 1 OF 2)
					B12-8393	HV ELECTRICAL RETICULATION
AMENDMENTS						
ASSOCIATED DRAWINGS						
						AGA377-7

DRAWING STATUS

- P PRELIMINARY/PROPOSED
- T TENDERING PURPOSES ONLY
- AC APP. FOR CONSTRUCTION
- AI AS INSTALLED
- C CANCELLED/SUPERSEDED

APPD DATE

PowerWater
NORTHERN TERRITORY


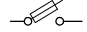




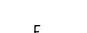
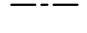
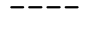
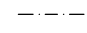

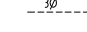
DES	A.GANGUR	POWER NETWORKS – PALMERSTON DISTRIBUTION			
DRN	K.TAVENER	SUBDIVISION OF LOT 11022			
CKD	A.GANGUR	ZUCCOLI SUBDIVISION – PHASE 1.1			
APPD		MASTER SERVICES PLAN			
SCALE	1:1000 AT A1	(SHEET 1 OF 2)			
ISSUED	28–3–13	A1	DRAWING NUMBER B12–8400		
ALL DIM. IN mm					
DRAFTING STANDARD TO A.S.1100		FILE No: NE590/11022			AMDT



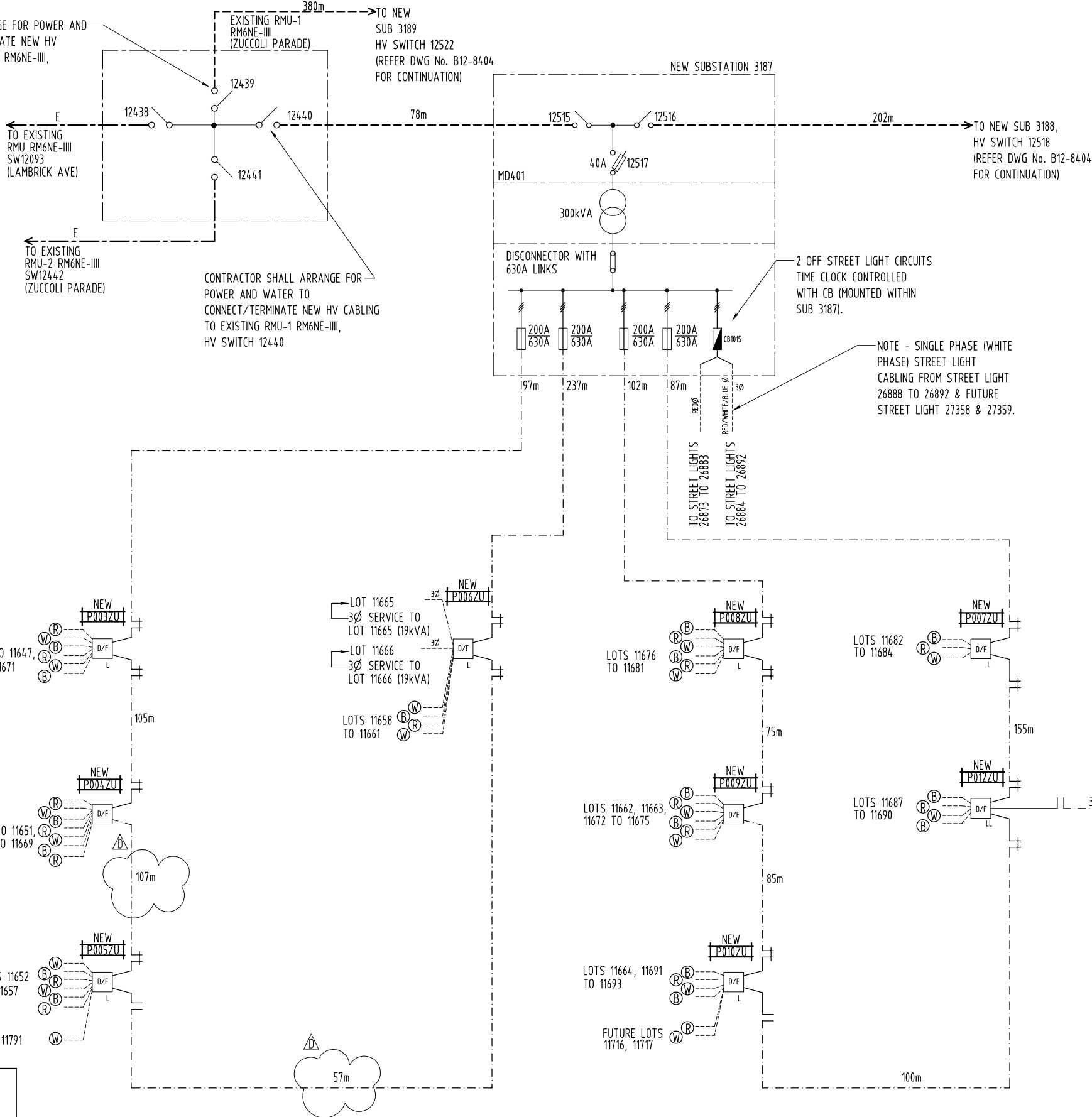
GIFTED ASSETS

NOTE - REFER TO DWG
No. B12-8395 FOR
PILLAR SCHEDULE.

LEGEND

-  HV SWITCH.
-  HV FUSED SWITCH.
-  LV STRIPPLE FUSES.
-  SUB DISCONNECTOR WITH LINKS.
-  DIST. LINK PILLAR OPEN LINKS.
-  DIST. LINK PILLAR CLOSED LINKS.
-  STREET LIGHT CONTROL PANEL
(MOUNTED WITHIN SUBSTATION SHOWN).
-  EXISTING HV CABLE - 6.35/11kV 3x1C 400 Sq mm AL (WATER
BLOCKED), XLPE/WBT/SCN/HDPE/NJ/PVC (IN HD uPVC
CONDUIT) & 1x1C 70 Sq mm Cu, BARE EARTH DIRECT BURIED.
-  HV CABLE - 6.35/11kV 3x1C 240 Sq mm AL (WATER
BLOCKED), XLPE/WBT/SCN/HDPE/NJ/PVC (IN HD uPVC
CONDUIT) & 1x1C 70 Sq mm Cu, BARE EARTH DIRECT BURIED.
'F' INDICATES FUTURE.
-  LV DISTRIBUTION CABLE - 0.6/1kV 4x1C 240 Sq mm AL, XLPE/NJ/PVC & 1x1C 70 Sq
mm Cu, BARE EARTH - DIRECT BURIED (OR WITHIN CONDUIT AT ROAD CROSSING). **NOTE:**
WHERE COMMON HV/LV TRENCH USED; ONLY ONE OFF 1x1C 70 Sq mm Cu, BARE EARTH
SHALL BE USED. ALSO REFER DWG No. B12-8394, NOTE 3.
'F' INDICATES FUTURE.
-  LV SERVICE/STREET LIGHT CABLE - 0.6/1kV 2x1C 25 Sq mm Cu, XLPE/NJ/PVC -
DIRECT BURIED (OR WITHIN CONDUIT AT ROAD CROSSING/INTO STREET LIGHT POLE).
ALSO REFER DWG No. B12-8394, NOTE 3/DWG No. B12-8396, NOTE 5. **NOTE:** STREET
LIGHT CIRCUITS INCLUDE 1x1C 35 Sq mm Cu BARE EARTH CONNECTED TO STREET
LIGHTING CIRCUITS ON NEW SUB 3187/NEW SUB 3189.
'F' INDICATES FUTURE/'4' INDICATES PARALLEL LV SERVICE.
-  3 PHASE LV SERVICE/3 PHASE STREET LIGHT CABLE - 0.6/1kV 4x1C 25 Sq mm Cu,
XLPE/NJ/PVC - DIRECT BURIED (OR WITHIN CONDUIT AT ROAD CROSSINGS/INTO STREET
LIGHT POLE). ALSO REFER DWG No. B12-8394, NOTE 3/DWG No. B12-8396, NOTE 5. **NOTE:**
STREET LIGHT CIRCUITS INCLUDE 1x1C 35 Sq mm Cu, BARE EARTH CONNECTED TO STREET
LIGHTING CIRCUITS ON NEW SUB 3187/NEW SUB 3189.
'F' INDICATES FUTURE.

CONTRACTOR SHALL ARRANGE FOR POWER AND
WATER TO CONNECT/TERMINATE NEW HV
CABLING TO EXISTING RMU-1 RM6NE-III,
HV SWITCH 12439



CONTRACTOR:

**NORTHERN POWER
SERVICES**

PO BOX 1844
PALMERSTON NT 0831

PHONE: 8932 9317
FACSIMILE: 8932 9346

DEVELOPER:

**URBEX
PTY LTD**

PO Box 38521
WINNELLIE NT 0821

PHONE: 8947 6970
FACSIMILE: 8947 6979
EMAIL: Andrew.Bartington@urbex.com.au
CONTACT: ANDREW BARTINGTON



**AGA CONSULTING
ENGINEERS PTY LTD
ELECTRICAL & MECHANICAL**
ACN 070 242 296


GPO BOX 3097
DARWIN NT 0801

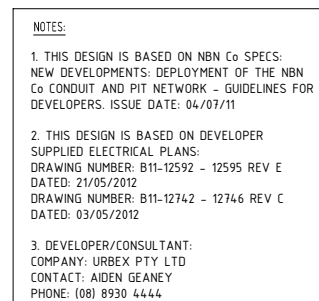
TELEPHONE: 08 89416582
FACSIMILE: 08 89421400
EMAIL: alek@agaeng.com.au

NO	DESCRIPTION	DRN	DATE	APPD	DRG NO	TITLE
D C B A	AS CONSTRUCTED AS CONSTRUCTED ISSUED FOR CONSTRUCTION ISSUED FOR POWER AND WATER APPROVAL	K.T. K.I. K.J.	28-3-13 31-1-13 17-9-12 13-9-12	A.G. A.G. A.G. A.G.	B12-8404 B12-8402 B12-8401 B12-8400 B12-8399 B12-8398 B12-8397 B12-8396 B12-8395 B12-8394 B12-8393	SINGLE LINE DIAGRAM (SHEET 2 OF 2) NOTES, HV SCHEMATICS & POLE SCHEDULE MASTER SERVICES PLAN (SHEET 2 OF 2) CONDUIT/DUCT LAYOUT (SHEET 1 OF 2) STREET LIGHTING RETICULATION (SHEET 2 OF 2) STREET LIGHTING RETICULATION (SHEET 1 OF 2) LV ELECTRICAL RETICULATION (SHEET 2 OF 2) LV ELECTRICAL RETICULATION (SHEET 1 OF 2) HV ELECTRICAL RETICULATION
AMENDMENTS						
ASSOCIATED DRAWINGS						

DRAWING STATUS	APPD	DATE
P PRELIMINARY/PROPOSED		
T TENDERING PURPOSES ONLY		
AC APP. FOR CONSTRUCTION		
AI AS INSTALLED		
C CANCELLED/SUPERSEDED		
AGA377-7		

PowerWater
NORTHERN TERRITORY

DES	A.GANGUR	POWER NETWORKS – PALMERSTON DISTRIBUTION		
DRN	K.TAVENER	SUBDIVISION OF LOT 11022		
CKD	A.GANGUR	ZUCCOLI SUBDIVISION – PHASE 1.1		
APPD		SINGLE LINE DIAGRAM & LEGEND		
SCALE	NTS	(SHEET 1 OF 2)		
ISSUED	28–3–13	A1	DRAWING NUMBER B12–8403	
ALL DIM.	IN mm			
DRAFTING STANDARD TO A.S.1100		FILE No: NE590/11022		AMDT



NBN Co DESIGN REVIEW COMPLETED,
COMMENCEMENT OF CONSTRUCTION MAY
NOW PROCEED IN ACCORDANCE WITH THIS
DESIGN.

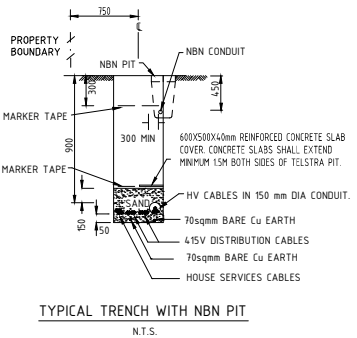
DATE: 3RD SEPTEMBER 2012

DRAWING TITLE: NBN CO PIT & PIPE DESIGN ZUCCOLI PHASE 1.1 DARWIN 61 LOTS + 7 FUTURE LOTS			
STATE: NT		REGION:	
FSA:	FSAM:	FDA:	
PROJECT No:		AYCA-JU3C3	
CADREF No:		G3NS-0130	
SCALE 1:500	SHEET 1	OF 2	REV. C



- NOTES:
1. COMMUNICATIONS CONDUITS, ASSOCIATED FITTINGS, CAPS, DRAW WIRE, HAUL ROPES, INSTALLATION, TRENCHING, BEDDING AND BACKFILL ARE TO BE PROVIDED IN ACCORDANCE WITH AS/ACIF S008:2006, ACIF C524:2004, AS/NZS2032:2006, AS/ACIF S009:2006 COUNCIL CIVIL WORKS SPECIFICATION, RELEVANT MANUFACTURERS RECOMMENDATIONS AND NBN Co "NEW DEVELOPMENTS: DEPLOYMENT OF THE NBN Co CONDUIT & PIT NETWORK - GUIDELINES FOR DEVELOPERS" (4 JULY 2011).
 2. 100mm & 50mm LOCAL NETWORK & LATERAL CONDUITS, 20mm & 50mm SERVICE DROP CONDUITS TO BE WHITE. BOTH ARE TO BE STAMPED "COMMUNICATIONS" AND COMPLY WITH AS/ACIF S008:2006.
 3. ALL CONDUIT BENDS SHALL BE PREFABRICATED. COMBINATIONS OF BENDS WITH ANGLES OF 15°, 22.5° AND 30° SHOULD BE USED TO CHANGE THE DIRECTION OF THE 100mm CONDUIT WHERE REQUIRED. 50mm CONDUIT BENDS UTILISED FOR LOCAL LATERAL DUCTS CAN UTILISE A 90° BEND WHERE REQUIRED.
 4. THE MINIMUM RADIUS OF THE CONDUIT BENDS SHOULD BE A MINIMUM OF 8 X THE OUTER DIAMETER OF THE CONDUIT.
 5. PROVIDE 20mm (MINIMUM) SERVICE DROP CONDUITS FOR SINGLE DWELLING UNITS AND 50mm (MINIMUM) SERVICE DROP CONDUITS FOR MULTI DWELLING UNITS. SERVICE DROP CONDUITS ARE TO BE EXTENDED FROM THE LOCAL NETWORK / BOUNDARY PIT OR SERVICE DROP ACCESS PIT TO THE LOT BOUNDARY AND SHALL BE CAPPED NO MORE THAN 1 METER INSIDE THE LOT.
 6. CONDUITS SHALL HAVE MINIMUM COVER BELOW THE FOLLOWING FINISHED SURFACES:
NATURE STRIP 450mm COVER
ROAD PAVEMENT 600mm COVER
 7. CONDUITS SHOULD ENTER THE PITS VIA THE END OF THE PIT ONLY AND BE LOCATED CENTRALLY WITH AT LEAST 50mm OF SPACE BETWEEN CONDUIT EXTERIOR AND THE PIT FLOOR. WHERE MULTIPLE DUCTS ENTER A PIT 25mm (MINIMUM) SEPARATION IS REQUIRED BETWEEN EACH DUCT.
 8. ALL CONDUIT ENDS ARE TO FINISH SQUARE AND FLUSH WITH THE PIT END WALLS AND BE FITTED WITH BUSHES FLUSH WITH THE PIT WALL ENDS. ALL ENTRIES SHOULD BE SEALED BETWEEN THE CONDUIT EXTERIOR AND THE PIT WALL.
 9. A DRAW STRING OR SIMILAR (SUITABLE FOR USE AS A CABLE HAULING AID) SHALL BE INSTALLED WITHIN EACH CONDUIT AND THE CONDUIT ENDS SEALED.
 10. MINIMUM RADIAL CLEARANCE BETWEEN NBN Co CONDUITS AND OTHER UNDERGROUND SERVICES SHALL BE MAINTAINED IN ACCORDANCE WITH THE FOLLOWING TABLE:

UNDERGROUND SERVICES	MINIMUM RADIAL CLEARANCE TO U/G O/F CONDUITS
GAS - LARGE MAIN (OVER 110mm DIA)	300mm
SMALL MAIN (75mm DIAMETER OR LESS)	150mm
ELECTRICAL - HIGH VOLTAGE	300mm
LOW VOLTAGE	100mm
WATER - HIGH CAPACITY MAIN	300mm
LOCAL RETICULATION	150mm
SEWER - MAINS	300mm
CONNECTIONS TO MAINS	150mm
OTHER CARRIERS/COMMUNICATION CABLES	100mm
DRAINAGE - MAINS	300mm
HOUSE CONNECTIONS TO MAINS	150mm

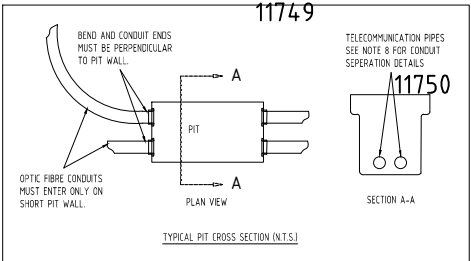


AS CONSTRUCTED
INFORMATION CERTIFIED BY
BMD URBAN PTY LTD

SIGNED.....DATE.....

NBN Co DESIGN REVIEW COMPLETED,
COMMENCEMENT OF CONSTRUCTION MAY
NOW PROCEED IN ACCORDANCE WITH THIS
DESIGN.

DATE: 3RD SEPTEMBER 2012



- NOTES:
1. THIS DESIGN IS BASED ON NBN Co SPECS: NEW DEVELOPMENTS: DEPLOYMENT OF THE NBN Co CONDUIT AND PIT NETWORK - GUIDELINES FOR DEVELOPERS. ISSUE DATE: 04/07/11
 2. THIS DESIGN IS BASED ON DEVELOPER SUPPLIED ELECTRICAL PLANS:
DRAWING NUMBER: B11-12592 - 12595 REV E
DATED: 21/05/2012
DRAWING NUMBER: B11-12742 - 12746 REV C
DATED: 03/05/2012
 3. DEVELOPER/CONSULTANT:
COMPANY: URBEX PTY LTD
CONTACT: AIDEN GEANEY
PHONE: (08) 8930 4444

PROJECT LEGEND	
CONDUIT MAIN	P2 Pit-Service Drop Access Pit 650mm(L) x 280mm(W) x 565mm(D)
CONDUIT DROP	P5 Pit-Local Network / Boundary Pit 700mm(L) x 450mm(W) x 650mm(D)
EXISTING NETWORK	P8 Pit-Local Network Conn. / Dist. Pit 1360mm(L) x 555mm(W) x 840mm(D)
TELECOMMUNICATIONS CONDUIT	P9 Pit-Fibre Distribution Hub Pit 2000mm(L) x 555mm(W) x 900mm(D)
TELECOMMUNICATIONS CONDUIT	Fibre Distribution Hub
TELECOMMUNICATIONS CONDUIT	EPD HAZARD AREA

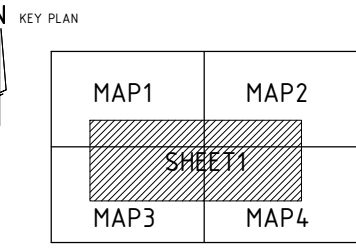
****ATTENTION****
CONSTRUCTORS DO NOT
change or alter job
specifications unless first
checking with designer.

REV	DATE	DRAFTER	DESCRIPTION	APPROVED
C	14.01.13	C.R (BMD)	AS CONSTRUCTED	P.J
B	03.09.12	S.M (G3NS)	ISSUED FOR CONSTRUCTION	G.J (G3NS)
A	02.07.12	S.M (G3NS)	INITIAL DESIGN OF INTENT	G.J (G3NS)

NBNCO APPROVAL RECORD:	
SIGNATURE	DATE
<input type="checkbox"/> DO	
<input type="checkbox"/> WD	
<input type="checkbox"/> AB	
QUALITY RECORD :	
NBNCO DISCLAIMER	
THIS DOCUMENT HAS BEEN PREPARED SOLELY FOR THE USE OF NBNCO LIMITED (ABN 86 136 533 741) FOR USE IN MAINTAINING NBNCO FACILITIES. IT HAS NOT BEEN CREATED FOR ANY OTHER USE. IT SHOULD NOT BE SCALED TO LOCATE NBNCO ASSETS. NO WARRANTY IS GIVEN THAT THE INFORMATION IS ACCURATE OR COMPLETE.	

NBNCo Limited

DESIGNED BY:
G3 NETWORK SERVICES PTY LTD
PO BOX 95 CHELSEA VICTORIA 3196
PH (03) 9773 9639
E: glynj@g3networkservices.com.au



DRAWING TITLE: NBN CO PIT & PIPE DESIGN ZUCCOLI PHASE 1.1 DARWIN 61 LOTS + 7 FUTURE LOTS		
STATE: NT	REGION:	
FSA:	FSAM:	FDA:
PROJECT No: AYCA-JU3C3		
CADREF No: G3NS-0130		
SCALE 1:500	SHEET No. 2	OF 2 REV. C